

---

ECAM22X.2Y - 22X.3Y

# MAGNIFICA START

QUICK GUIDE



---

**DeLonghi**





DeLonghi



Per completare correttamente il primo avvio, la manopola deve essere in pos. 0 • Make sure the steam knob

is on 0 pos. for the whole operation • Pour compléter correctement le premier démarrage, la manette doit

être positionnée sur 0 • Um die erste Inbetriebnahme korrekt zu beenden, muss der Drehknopf auf Pos. 0 stehen • Om

de eerste inwerkingstelling correct te voltooien, moet de knop geplaatst zijn op stand 0 • Para completar correctamente

la primera puesta en funcionamiento, el mando debe estar en la pos. 0 • Para realizar correctamente o primeiro arranque,

o manipulo deve estar na pos. 0 • Για να ολοκληρωθεί σωστά η αρχική εκκίνηση λειτουργίας, ο διακόπτης πρέπει να είναι

στη θέση 0 • For å fullføre første oppstart korrekt må bryteren være i pos. 0 • För att fullborda den första starten korrekt, ska vredet vara i läge. 0 •

For at gennemføre den første opstart korrekt skal knappen stå i pos. 0 • Jotta ensimmäinen käynnistys sujuisi oikeaoppisesti, nupin tulee olla

asepöissa 0 • Для правильного завершения первого запуска рукоятка должна быть в поз. 0 • Щоб правильно завершити налаштування

машини, кнопки пари повинна бути в положенні «0» • Машинаны дұрыс орнату үшін бу беру тұтқасы "0" күйінде болуы керек •

Az első indítás sikeres elvégzése érdekében a szabályozó gombnak 0 • Pro správné dokončení prvního spuštění musí být knoflík v pol. 0 • Pre

správne dokončenie prvého spustenia musí byť gombík v pol. 0 • Aby prawidłowo zakończyć pierwsze uruchomienie, pokrętko musi się znajdować

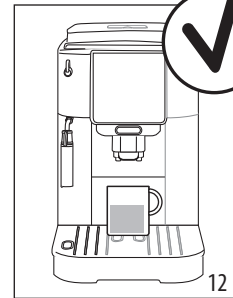
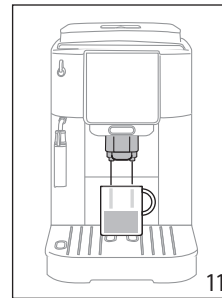
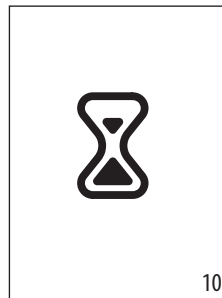
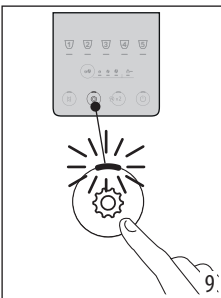
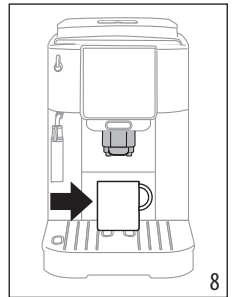
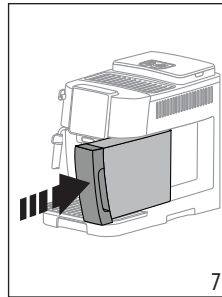
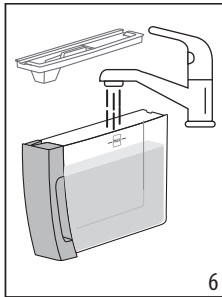
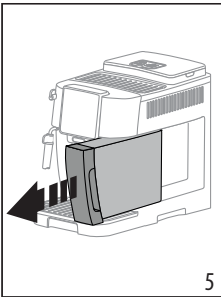
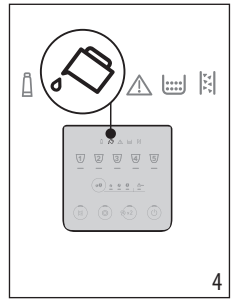
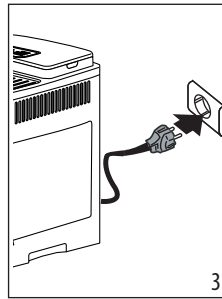
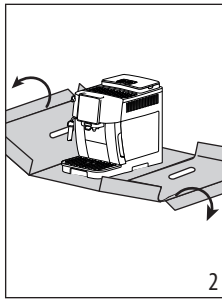
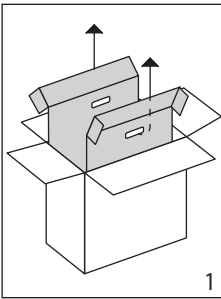
w poz. 0 • Za ispravno dovršenje prvog pokretanja, ručica mora biti u poz. 0 • Da bi pravilno zaključili prvi zagon, mora biti ručica na pol. 0 • Za

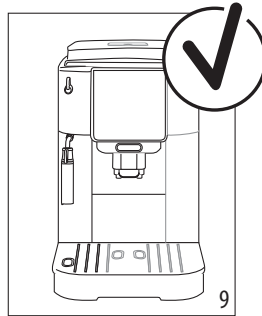
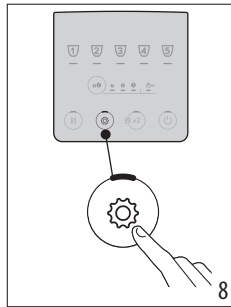
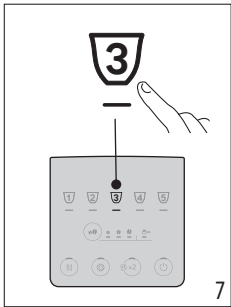
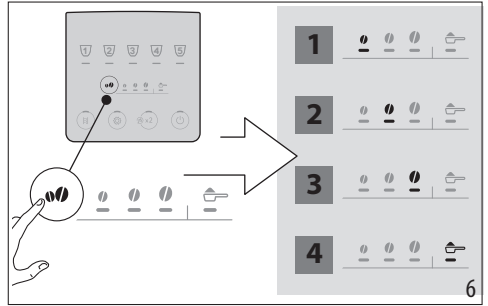
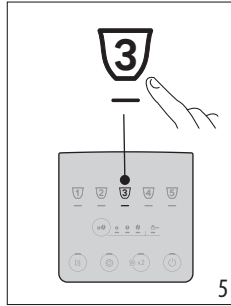
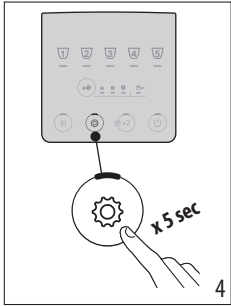
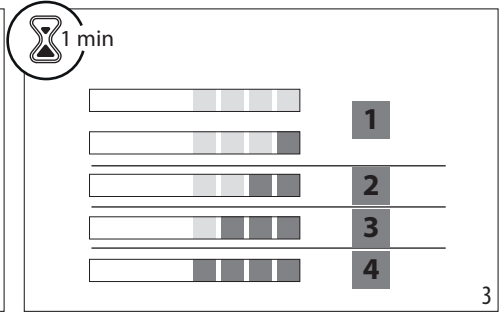
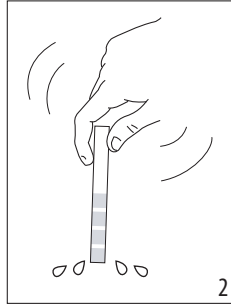
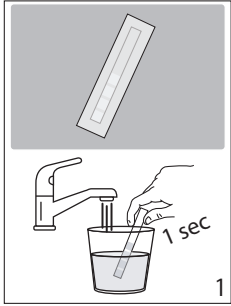
ispravno završetak prvog pokretanja, ručica mora da bude u pol. 0 • Asigurați-vă că butonul pentru abur este în poziția 0 • Переконайтеся, що

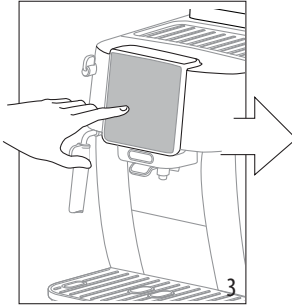
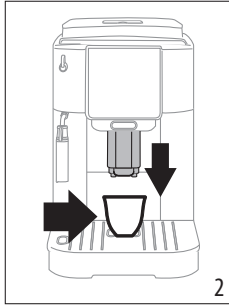
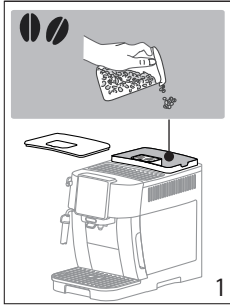
ручка подачі пари знаходиться в положенні 0 • Pentru a finaliza corect prima punere în funcțiune, butonul rotativ trebuie să fie pe poz. 0 • İlk

başlatmayı doğru şekilde tamamlamak için düğmenin 0 konumunda olması gerekir



لإتمام بدء التشغيل الأول بطريقة صحيحة، يجب أن يكون المقبض في الموضع 0 • برای تکمیل صحیح تنظیمات دستگاه، گردونه بخار باید در حالت «0» قرار داشته باشد.

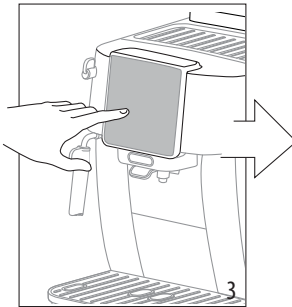
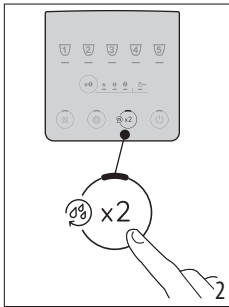
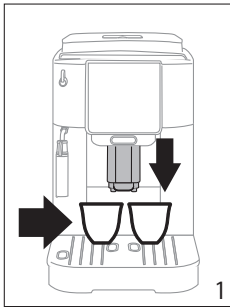
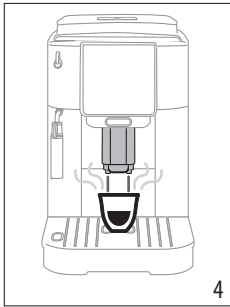




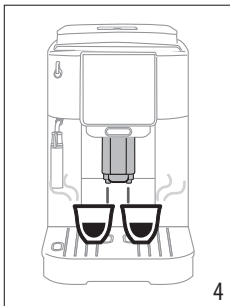


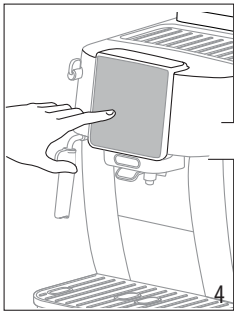
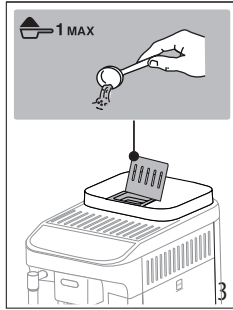
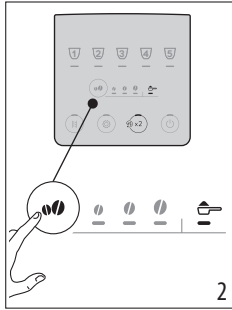
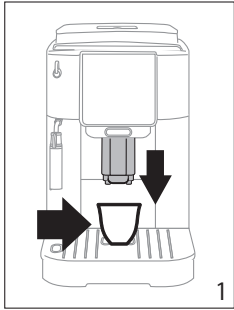
(\*)

-  Espresso
-  Coffee
-  Long
-  Doppio+
-  Americano



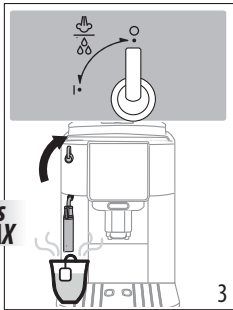
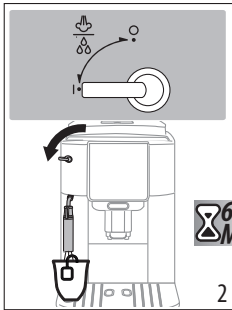
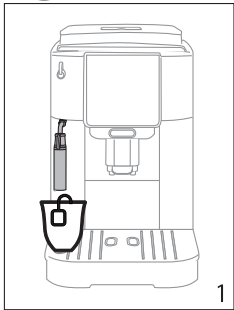
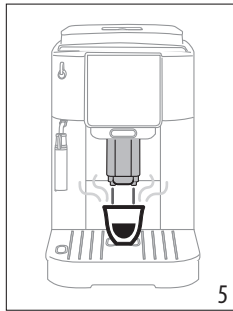
 Espresso

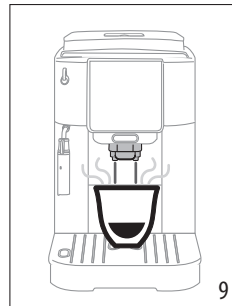
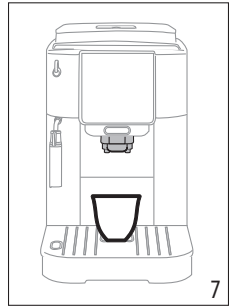
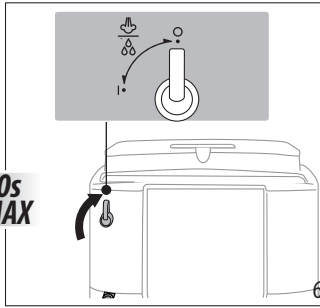
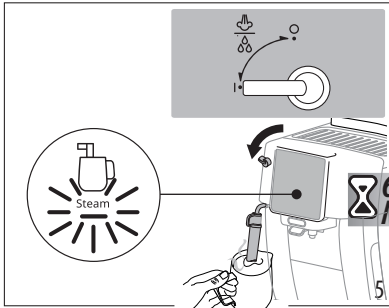
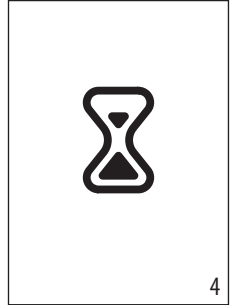
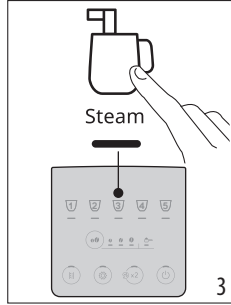
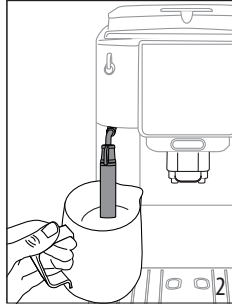
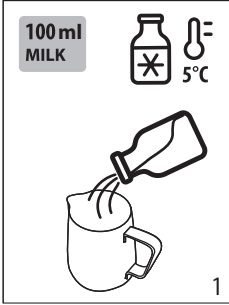




(\*)

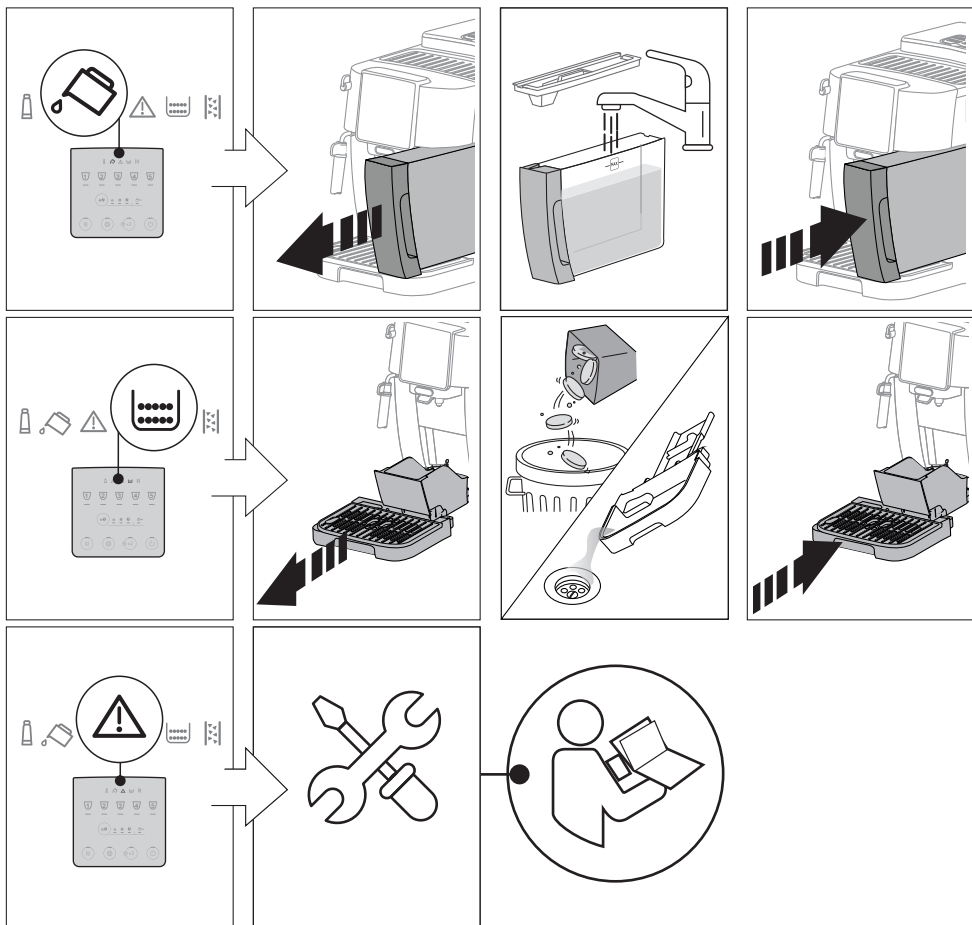
-  Espresso
-  Coffee
-  Long
-  Americano







50°C	×	×	×	✓	✓
	✓	✓	✓	✓	✓



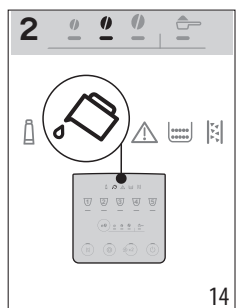
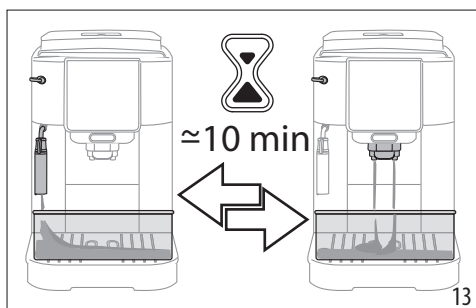
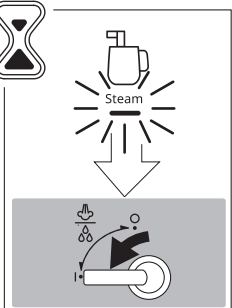
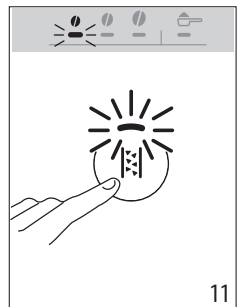
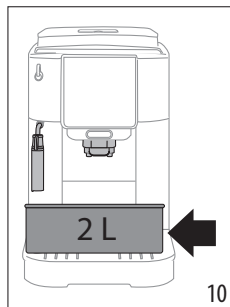
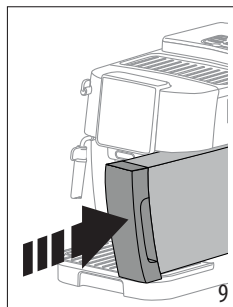
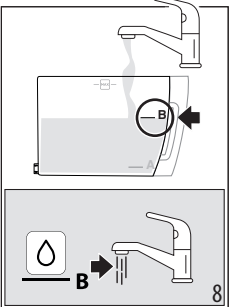
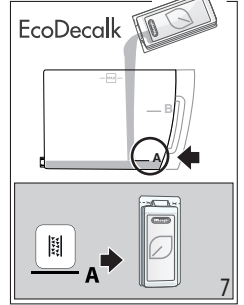
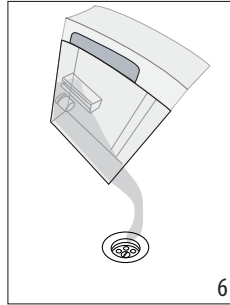
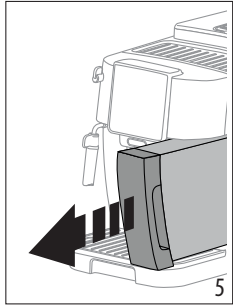
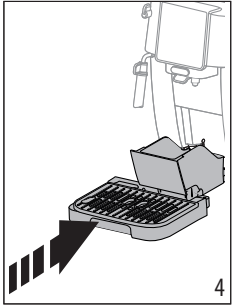
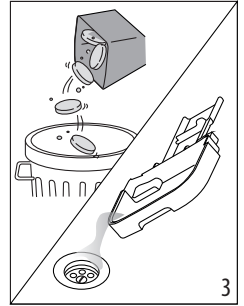
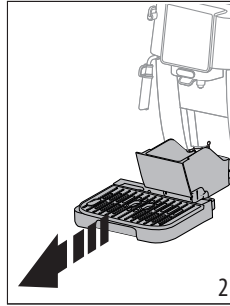
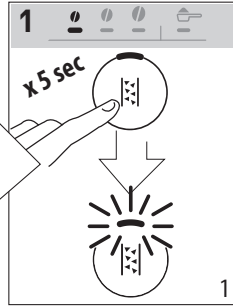
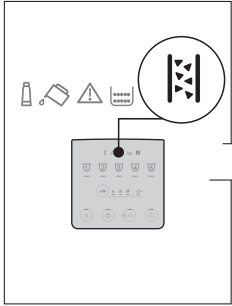


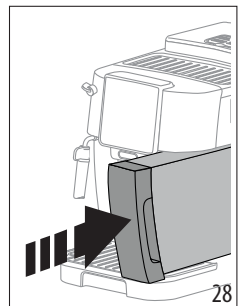
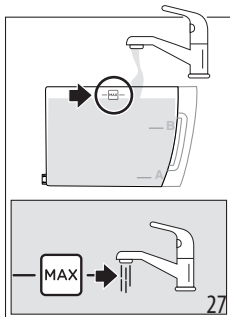
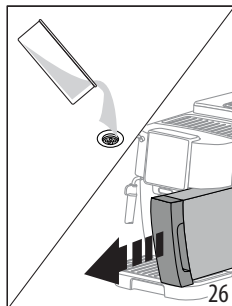
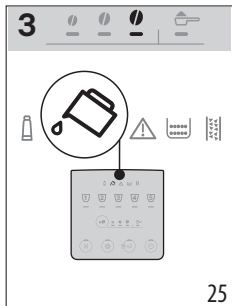
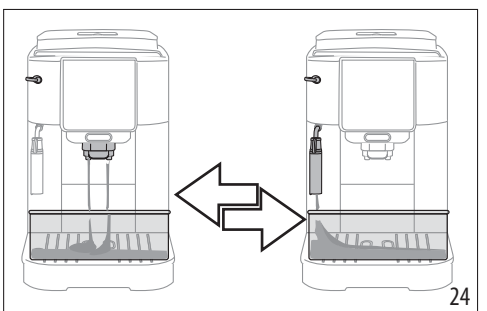
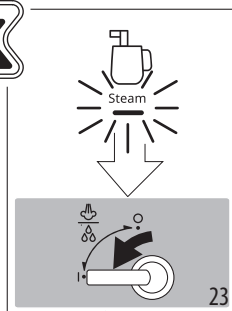
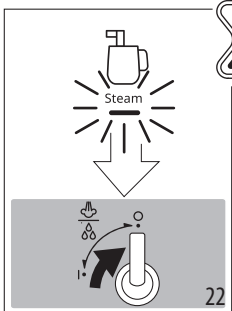
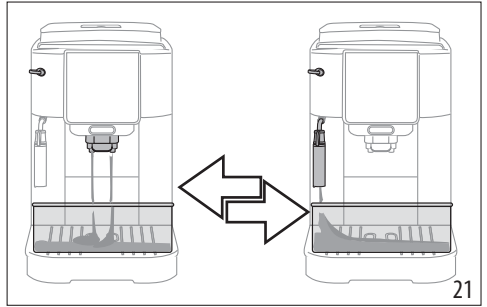
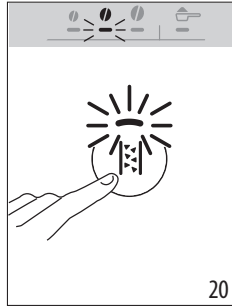
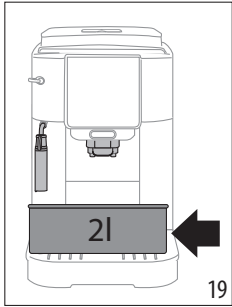
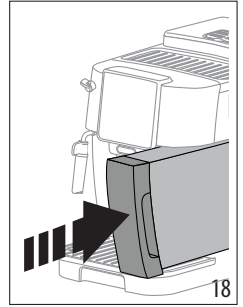
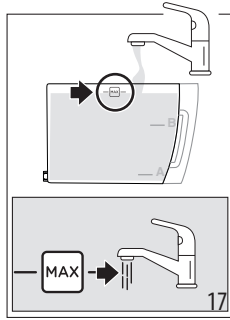
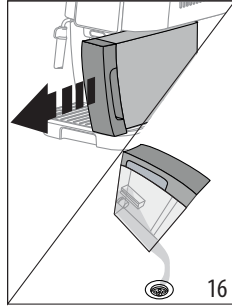
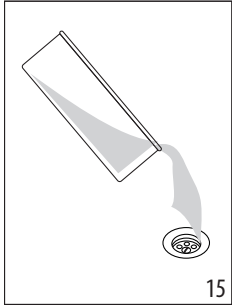


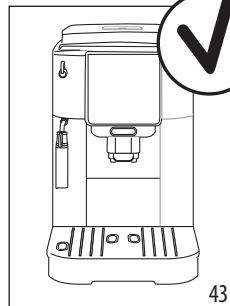
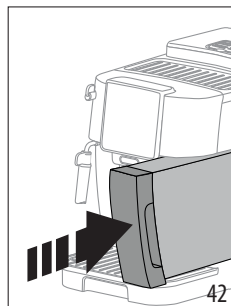
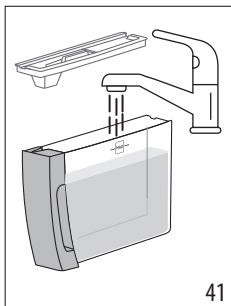
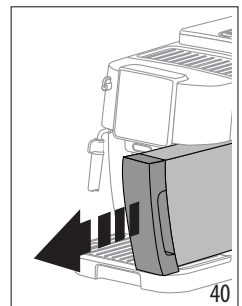
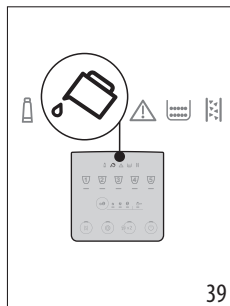
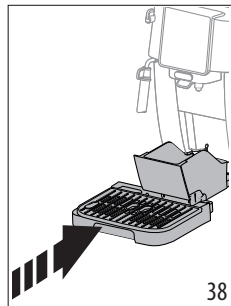
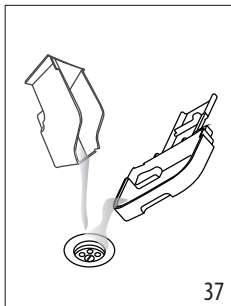
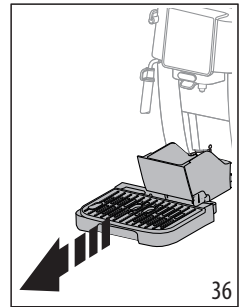
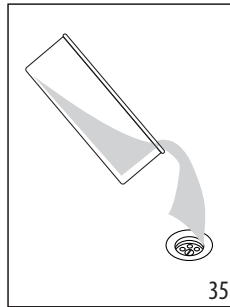
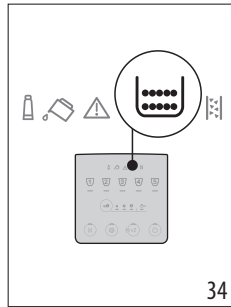
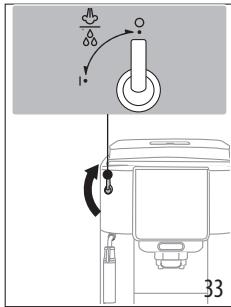
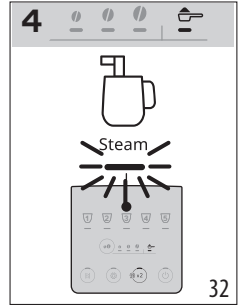
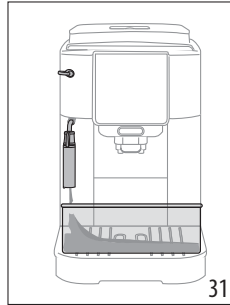
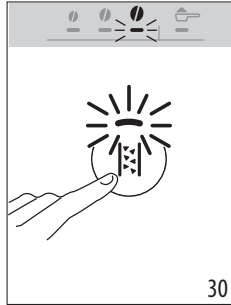
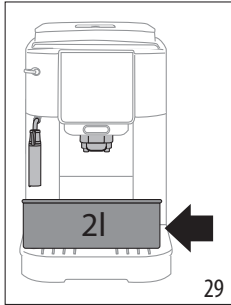
YouTube

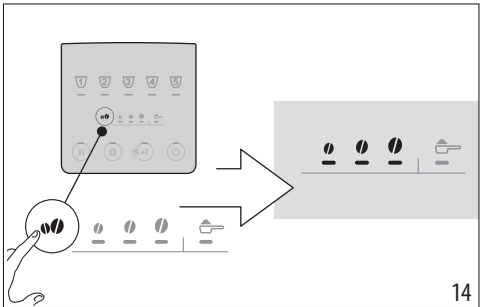
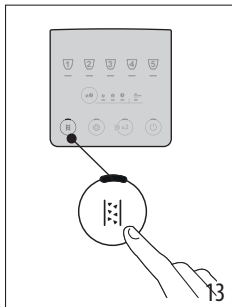
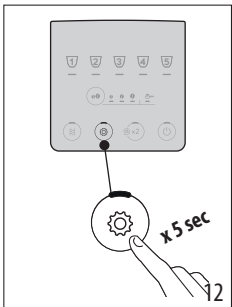
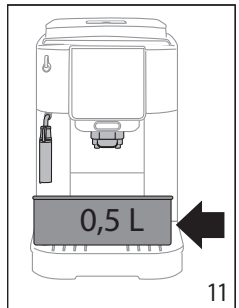
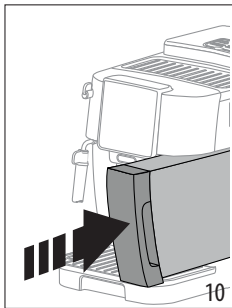
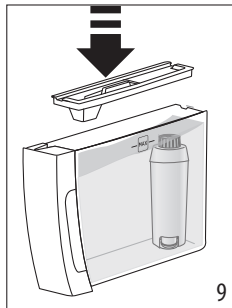
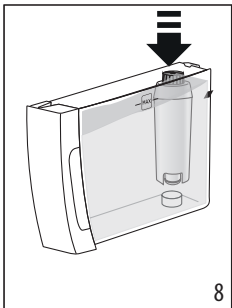
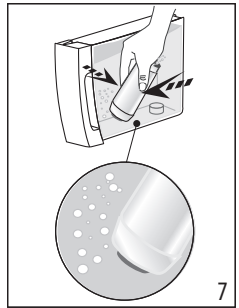
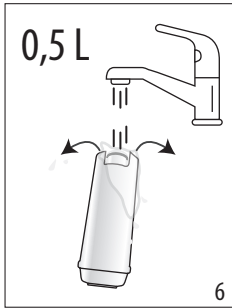
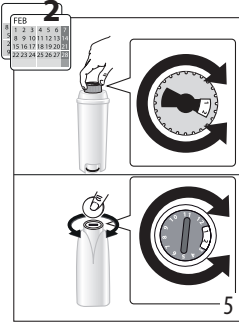
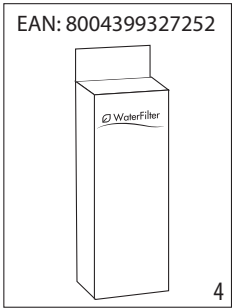
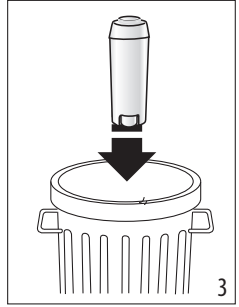
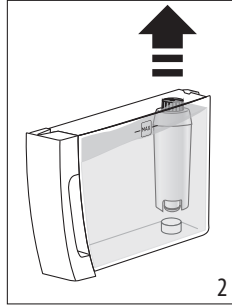
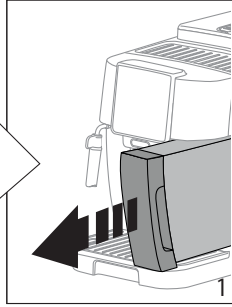
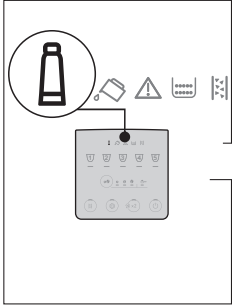


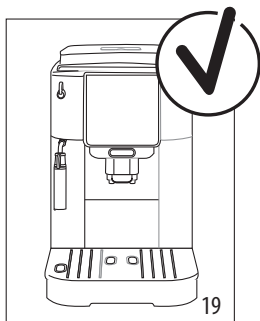
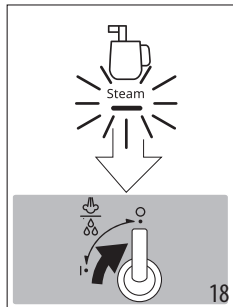
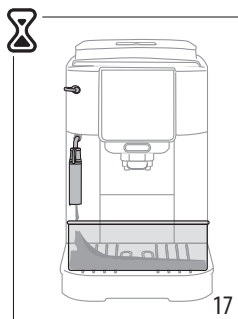
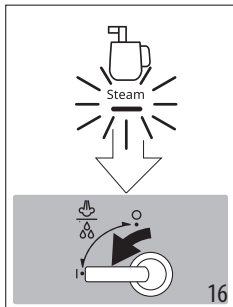
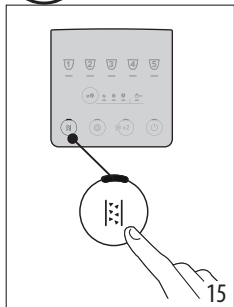
DeLonghi



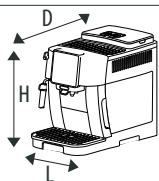








~ 220-240 V 50-60 Hz 1450 W



(LxDxH): 240 x 440 x 350 mm

8,8 Kg

 YouTube



More instructions available here



**Register Now**

[www.delonghi.com/register](http://www.delonghi.com/register)



De'Longhi Appliances via Seitz, 47 31100 Treviso, Italy [www.delonghi.com](http://www.delonghi.com)

57132C7931\_01\_0522