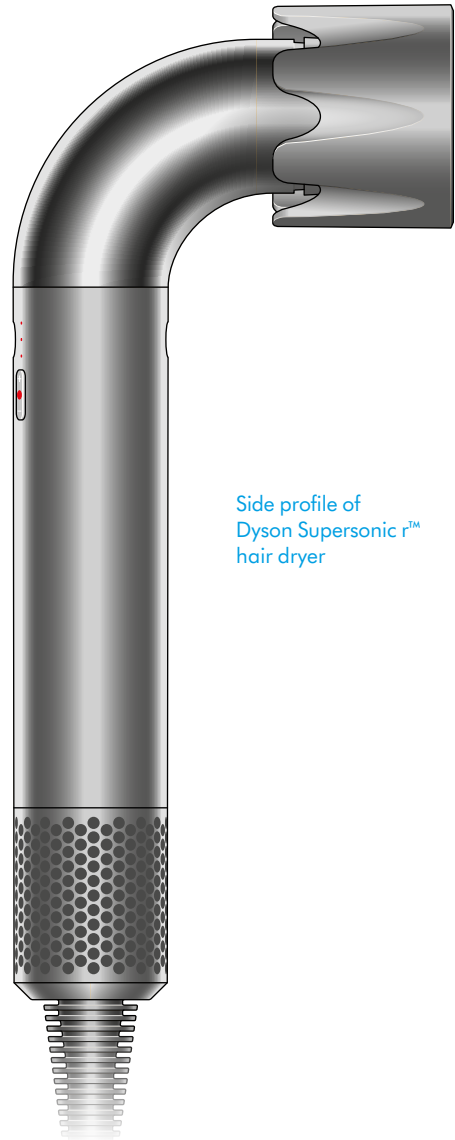


supersonic **r**

Dyson Supersonic r™ logo

Dyson Supersonic r™ hair dryer User manual

SV12 JN.00000 PN.000000-00-00
00.00.00 VERSION NO.01



Side profile of
Dyson Supersonic r™
hair dryer

Contents

In the box

Functions

Getting started

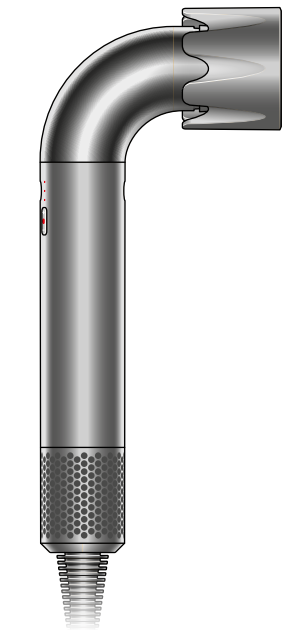
Using your Dyson Supersonic r™
hair dryer

Taking care of your machine

dyson

Dyson logo

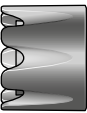
In the box



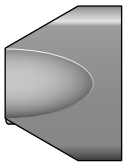
Side profile of
Dyson Supersonic r™
hair dryer
with all 5 attachments.

Dyson Supersonic r™ hair dryer
Dyson's precision hair dryer for superior styling¹ and salon finish. Engineered as the lightest² and smallest³ hair dryer in the range. Includes five Intelligent attachments.

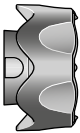
You can buy additional attachments at www.dyson.hk



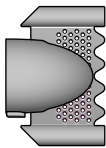
Powerful air
attachment



Pro concentrator



Gentle air
attachment



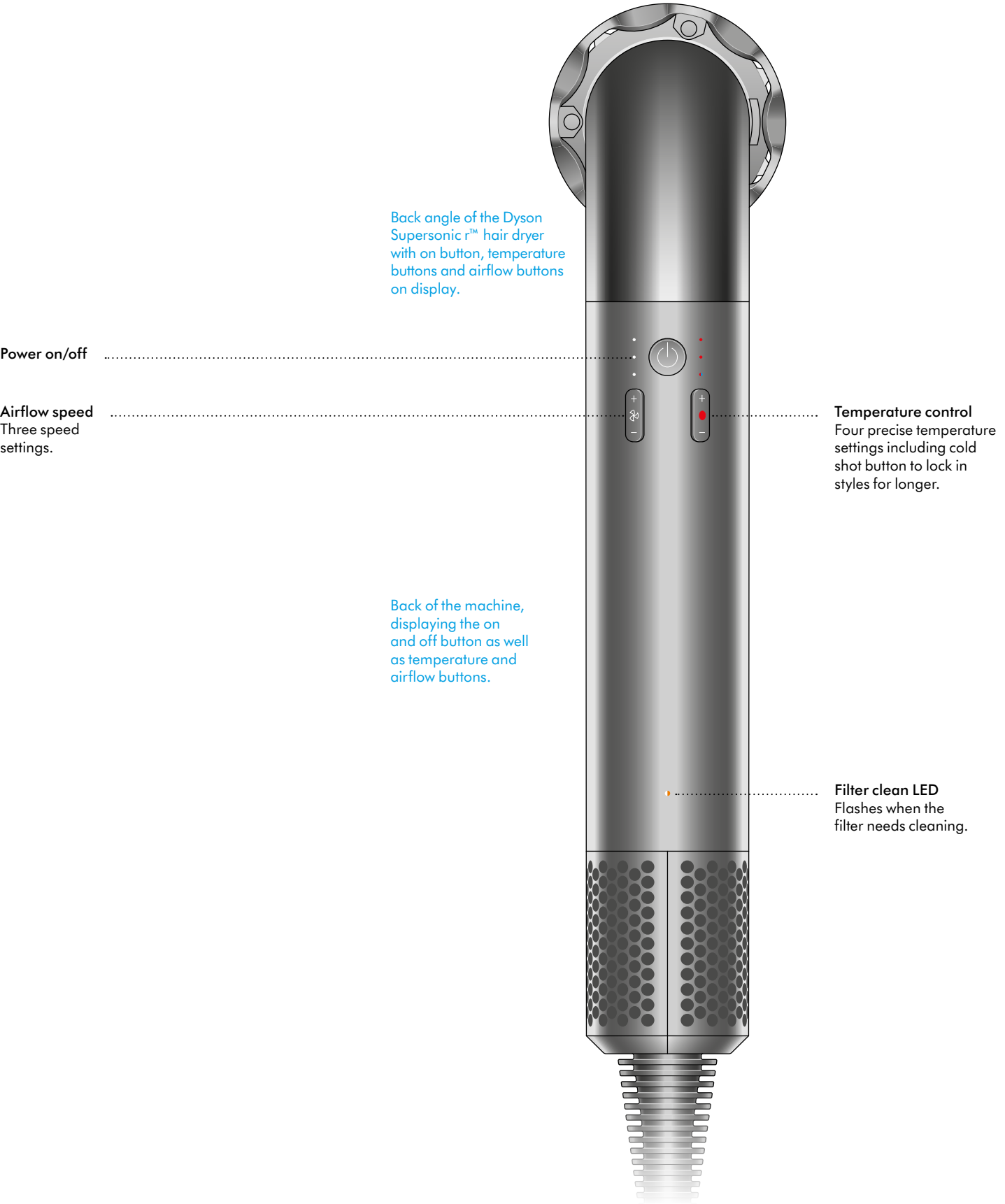
Smoothing nozzle



Flyaway attachment

1,3. vs. Dyson Supersonic™ range. 2. vs. Dyson Supersonic™ hair dryer. Based on body weight.

Functions



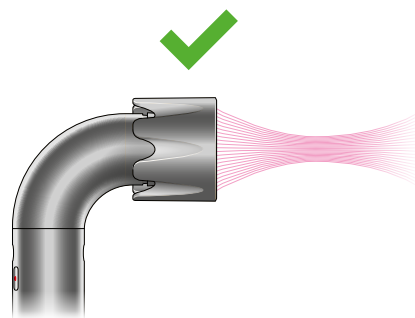
Getting started

Remove machine from box

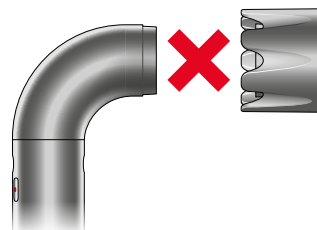
Plug in your machine

You must fit an attachment before switching on the machine in order for your hair dryer to work.

Attachment connected to machine with airflow being directed outwardly and a tick.

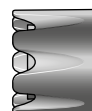


Attachment disconnected from the machine with a cross.



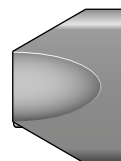
Powerful air attachment

Produces high-velocity airflow to dry hair fast.



Pro concentrator

Focuses air precisely where you need it.



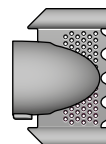
Gentle air attachment

Evenly diffuses and smooths airflow so it's gentler on the scalp.¹



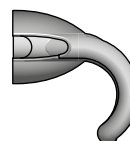
Smoothing nozzle

Helps deliver more ions² for decreased frizz and a smooth, natural finish.



Flyaway attachment

Attracts longer hairs and hides flyaways on finished styles, using the Coanda effect.³



Using your hair dryer

Settings

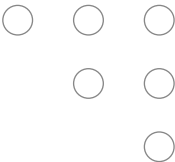
Intelligent attachments are preset with optimal airflow and temperature ranging, and recognise your last-used setting with Attachment learning.

LEDs

LED colours indicate the four possible heat settings and three airflow settings.

Airflow

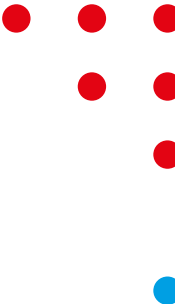
Showing three circles for high airflow, two circles for medium airflow and one circle for low airflow.



Fast
Medium
Gentle

Temperature

Shows three red circles for high temperature, two red circles for medium temperature and one red circle for low temperature.



High
Medium
Low
Cool

Diagnostics

Yellow flashing LED:
Your filter needs cleaning.



White flashing LED:
Your filter is either absent or not fitted properly. Ensure filter is fitted correctly for your hair dryer to work.



Shows different LED variants for different messaging from the machine for maintenance.

White-blue LEDs flashing:
There is no attachment fitted. Your machine will not work without an attachment.



All three white LEDs flashing:
Press the on/off button to clear an error.



All three red LEDs flashing:
Switch off your machine, switch off the mains plug and unplug your plug from the socket. Then, insert the plug back in the socket, switch the mains plug on and turn your machine back on.



All of the white and red LEDs flashing together:
Contact Dyson at:
Hong Kong: (852) 3065 9666
Macau: (853) 6852 8567
Email: help@dyson.com.hk



To learn how to clean your filter, follow the below instructions or watch the video at: <https://www.dyson.hk/en-HK/products/hair-care/dyson-supersonic-r-hair-dryer/owners>.

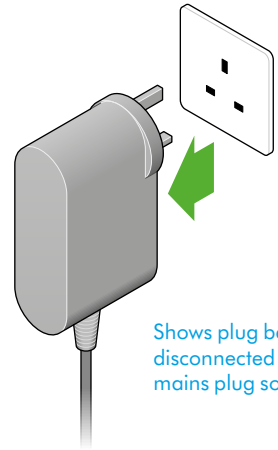
Taking care of your machine

Cleaning your filter

To maintain optimal performance of your hair dryer, clean your filter when prompted by the yellow flashing LED light, or if you feel reduced airflow. A white light flashes when the filter is absent or not properly fitted.

Step 1

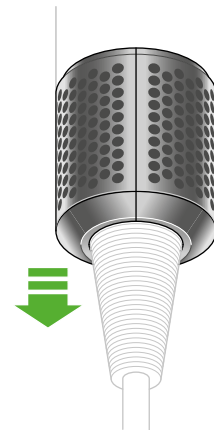
Unplug your machine from the mains electricity supply and allow to cool before cleaning your filter.



Shows plug being disconnected from the mains plug socket.

Step 2

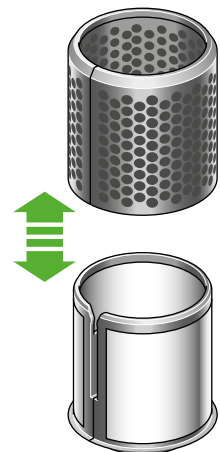
Remove the filter cage by sliding down the power cord and opening at the split line.



Shows filter being disconnected from the machine by sliding downwards.

Step 3

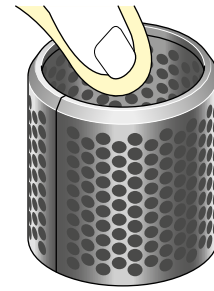
Slide the two filter pieces away to separate.



Shows filter cage and inner filter being separated.

Step 4

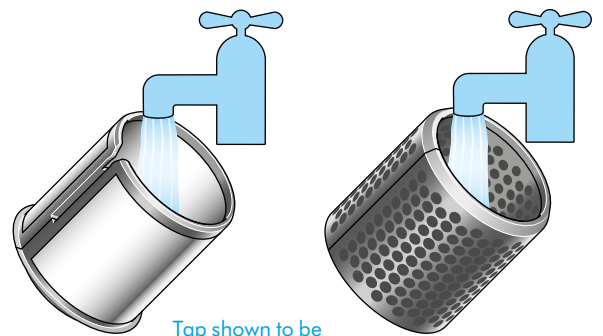
Wipe away any loose, large debris such as hair strands or large dust particles, from the filter cage.



User wiping the filter casing from debris.

Step 5

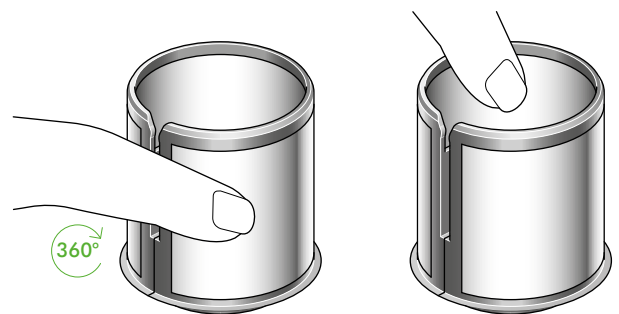
Rinse the two filter parts under a warm running tap.



Tap shown to be washing the external and internal filter.

Step 6

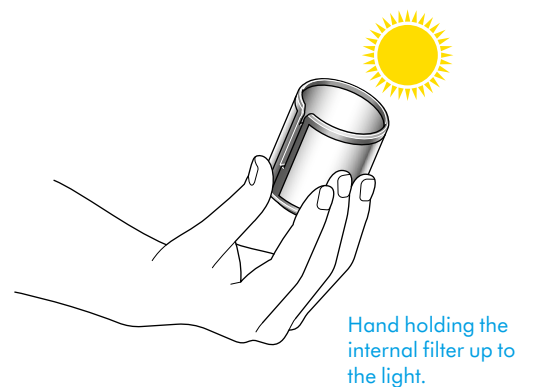
Using a pea-sized amount of clarifying shampoo, lightly scrub the exterior of the inner filter cage in small, circular motions. Then, lightly scrub the interior of the inner filter cage with up and down motions before rinsing.



Finger rubbing in the shampoo to the internal filter.

Step 7

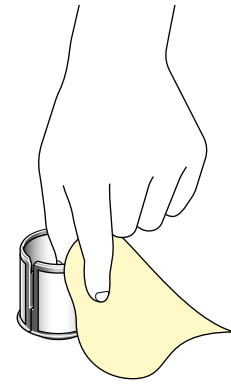
Hold up to the light to ensure there is no remaining debris or dirt.



Hand holding the internal filter up to the light.

Step 8

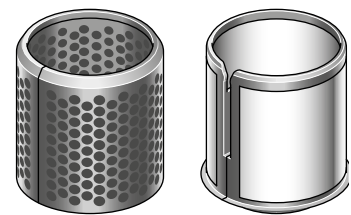
Using a pinching motion, gently squeeze dry the inner filter cage with a dry paper towel.



Hand shown to be wiping the internal filter and dabbing away dampness.

Step 9

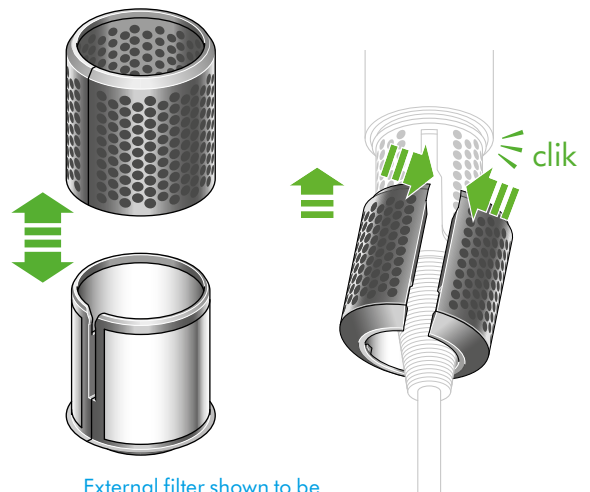
Allow both filters to fully dry before proceeding.



External and internal filter.

Step 10

Slide the inner filter back into the cage, then open at the split line and replace back on to the machine to click into place.

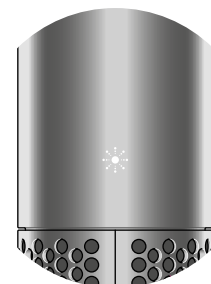


External filter shown to be reconnecting to the machine with a magnetic click demonstrated by arrows.

White LED flashing:

Your filter is either absent or not fitted properly. Ensure filter is fitted correctly for your hair dryer to work.

To watch how to clean and maintain your machine, visit <https://www.dyson.hk/en-HK/products/hair-care/dyson-supersonic-r-hair-dryer/owners>.



White light is flashing on the machine.